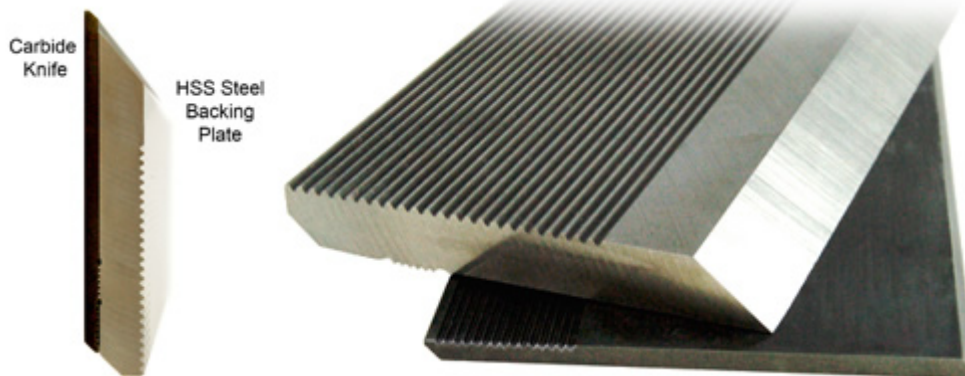


Edge of Arlington Saw & Tool, Inc.

124 South Collins
Arlington, TX 76010
Phone: 817-461-7171 • Fax: 817-795-6651
Toll Free: 888-461-7171
Email: info@eoasaw.com
Website: www.eoasaw.com



**Item #US508-C,
Global Tooling Knife-
Lock Carbide
Moulder Knife
\$108.69**

Thank you for shopping
with us!

SPECIFICATIONS

Manufacturer	Global Tooling
Type	Carbide Only
Height	2 3/8 in (60mm)
Thickness	10 mm
Length	10 mm