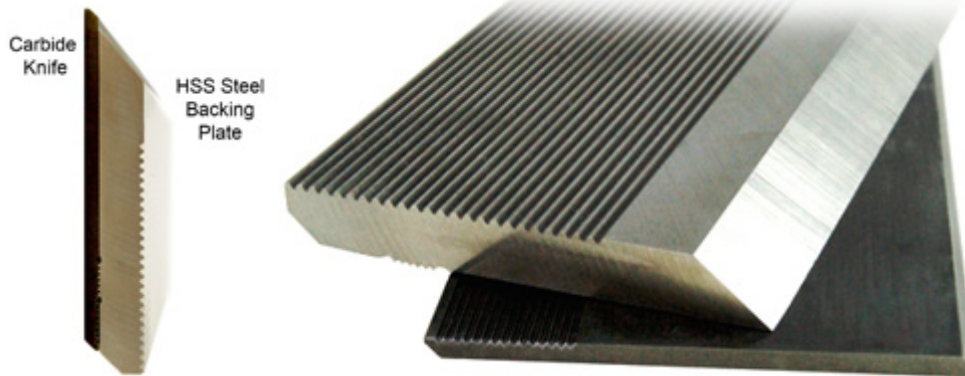


## Edge of Arlington Saw & Tool, Inc.

124 South Collins  
Arlington, TX 76010  
Phone: 817-461-7171 • Fax: 817-795-6651  
Toll Free: 888-461-7171  
Email: [info@eoasaw.com](mailto:info@eoasaw.com)  
Website: [www.eoasaw.com](http://www.eoasaw.com)



**Item #US2003,  
Global Tooling Knife-  
Lock Carbide  
Moulder Knife  
\$279.06**

Thank you for shopping  
with us!

### SPECIFICATIONS

<b>Manufacturer</b>	Global Tooling
<b>Type</b>	HSS Steel Backing Plate & Carbide Knife
<b>Height</b>	1 1/2 in (38mm)
<b>Thickness</b>	10 mm
<b>Length</b>	10 mm