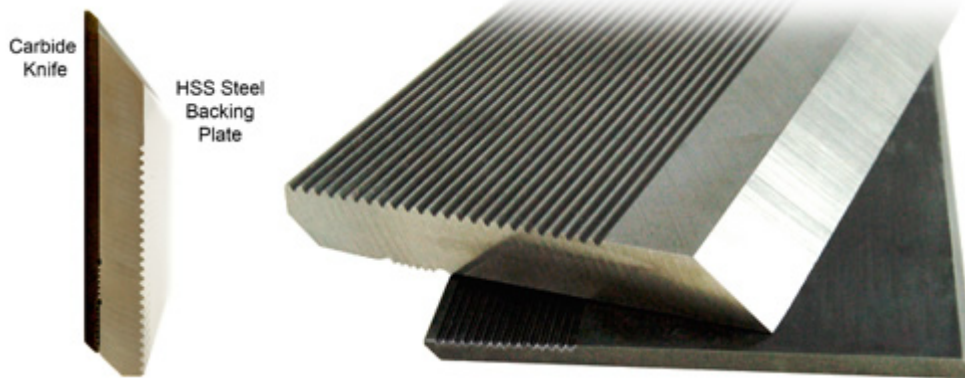


Edge of Arlington Saw & Tool, Inc.

124 South Collins
Arlington, TX 76010
Phone: 817-461-7171 • Fax: 817-795-6651
Toll Free: 888-461-7171
Email: info@eoasaw.com
Website: www.eoasaw.com



**Item #US1803-C,
Global Tooling Knife-
Lock Carbide
Moulder Knife
\$196.06**

Thank you for shopping
with us!

SPECIFICATIONS

| | |
|---------------------|-----------------|
| Manufacturer | Global Tooling |
| Type | Carbide Only |
| Height | 1 1/2 in (38mm) |
| Thickness | 10 mm |
| Length | 10 mm |