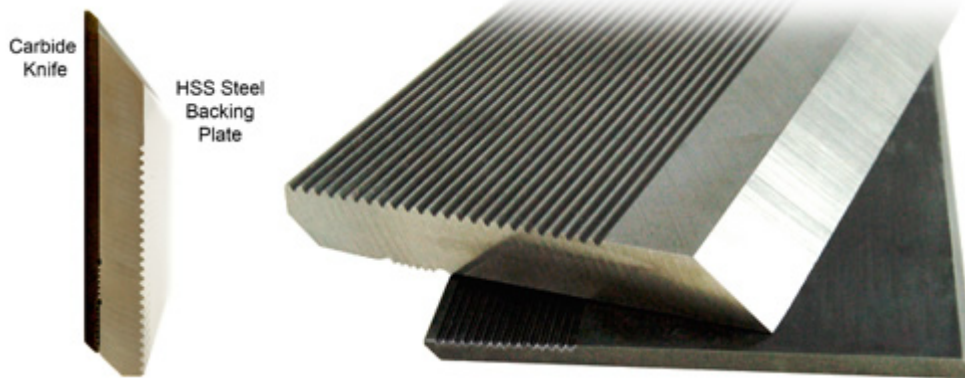


Edge of Arlington Saw & Tool, Inc.

124 South Collins
Arlington, TX 76010
Phone: 817-461-7171 • Fax: 817-795-6651
Toll Free: 888-461-7171
Email: info@eoasaw.com
Website: www.eoasaw.com



**Item #US1708,
Global Tooling Knife-
Lock Carbide
Moulder Knife
\$435.11**
Thank you for shopping
with us!

SPECIFICATIONS

Manufacturer	Global Tooling
Type	HSS Steel Backing Plate & Carbide Knife
Height	2 3/8 in (60mm)
Thickness	10 mm
Length	10 mm