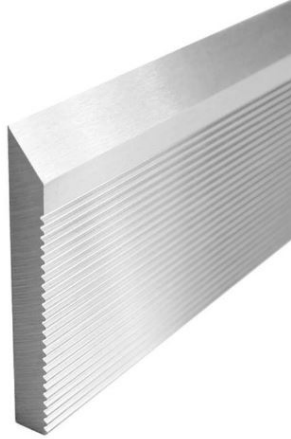


Edge of Arlington Saw & Tool, Inc.

124 South Collins
Arlington, TX 76010
Phone: 817-461-7171 • Fax: 817-795-6651
Toll Free: 888-461-7171
Email: info@eoasaw.com
Website: www.eoasaw.com



Item #SCM31225, Global Tooling HSS Corrugated Back Moulder Steel Knife

\$178.92

Thank you for shopping with us!

Tungsten (6% W), Molybdenum (5.5% Mo), and Vanadium (2.2% V). Great for long runs in most soft and hardwoods.

SPECIFICATIONS

Manufacturer	Global Tooling
Length	25 in
Thickness	5/16 in
Width	2 1/4 in