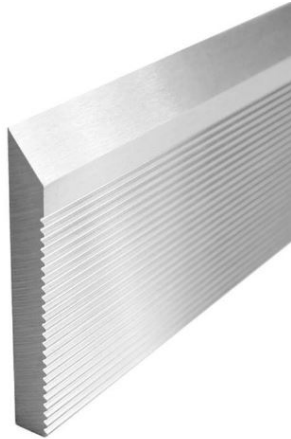


Edge of Arlington Saw & Tool, Inc.

124 South Collins
Arlington, TX 76010
Phone:817-461-7171 • Fax: 817-795-6651
Toll Free: 888-461-7171
Email: info@eoasaw.com
Website: www.eoasaw.com



Item #SCM25200, Global Tooling HSS Corrugated Back Moulder Steel Knife
\$136.55

Thank you for shopping with us!
Tungsten (6% W), Molybdenum (5.5% Mo), and Vanadium (2.2% V). Great for long runs in most soft and hardwoods.

SPECIFICATIONS

| | |
|---------------------|----------------|
| Manufacturer | Global Tooling |
| Length | 25 in |
| Thickness | 1/4 in |
| Width | 2 in |