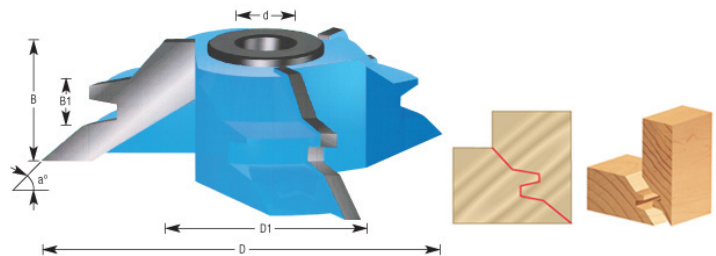
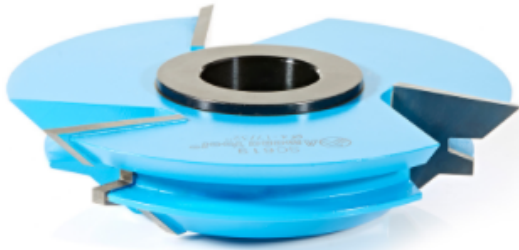


Edge of Arlington Saw & Tool, Inc.

124 South Collins
Arlington, TX 76010
Phone: 817-461-7171 • Fax: 817-795-6651
Toll Free: 888-461-7171
Email: info@eoasaw.com
Website: www.eoasaw.com

Item #SC619, Amana Tool Carbide-Tipped 3-Wing Lock Miter 45 Deg x 4-17/32 Dia x 1 in CH x 1 & 1-1/4 in Bore **\$128.42**

Thank you for shopping with us!



SPECIFICATIONS

| | |
|-------------------------------------|---|
| Manufacturer | Amana Tool |
| B1 | 3/8 in |
| Bore | 1 in & 1 1/4 in |
| Diameter | 4 17/32 in |
| Cut Height, Length, or Width | 1 in |
| Diameter (D1) | 2 31/64 in |
| Note | Rub collar for 1 1/4 in arbor only. Replacement 'T' bushing(s) #BU-550. |
| Angle | 46 deg |
| Rub Collar | C-017 |