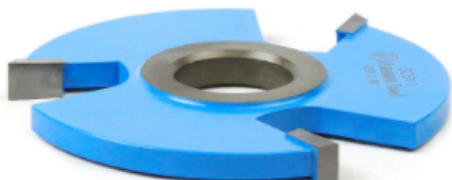


Edge of Arlington Saw & Tool, Inc.

124 South Collins
Arlington, TX 76010
Phone:817-461-7171 • Fax: 817-795-6651
Toll Free: 888-461-7171
Email: info@eoasaw.com
Website: www.eoasaw.com



Item #SC611, Amana Tool Carbide-Tipped 3-Wing Straight Edge 2-7/8 Dia x 1/4 x 1/2 & 3/4 Bore \$40.88

Thank you for shopping with us!

Over 250 different cutters for all your shaping needs. Extra-thick carbide tips offer many resharpenings and longer tool life. RPM rating: 12,000 and under. Cutters are furnished with either 1/2" , 3/4" , or 1 1/4" bore.



Cutters with 3/4" bore include 2 reduction bushings (1/2" x 3/4"), which will reduce the bore to 1/2" . Cutters with 1-1/4" bore include 2 reduction bushings (1" x 1-1/4") which will reduce the bore to 1" .



SPECIFICATIONS

Manufacturer	Amana Tool
Bore	1/2 & 3/4 in
Cut Height, Length, or Width	1/4 in
Note	--