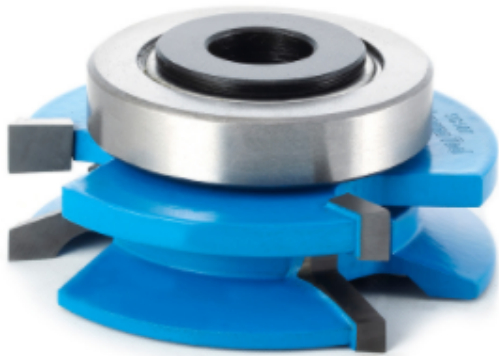


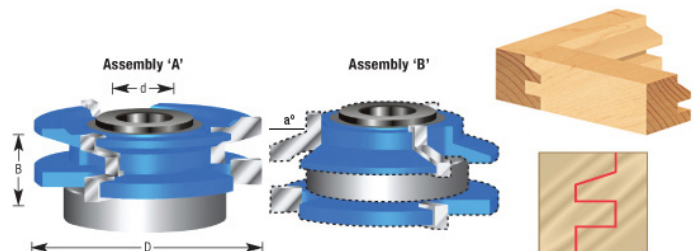
## Edge of Arlington Saw & Tool, Inc.

124 South Collins  
Arlington, TX 76010  
Phone: 817-461-7171 • Fax: 817-795-6651  
Toll Free: 888-461-7171  
Email: [info@eoasaw.com](mailto:info@eoasaw.com)  
Website: [www.eoasaw.com](http://www.eoasaw.com)



### Item #SC587, Amana Tool Carbide-Tipped 3-Wing Beveled Reversible Stile & Rail 2-13/32 Dia x 1 in x 1/2 & 3/4 Bore for 1-Inch Material \$71.23

Thank you for shopping with us!  
Designed for template shaping such as arched or cathedral doors, etc. Features a ball bearing center with a steel sleeve and is available with either 1/2," 3/4" , or 1-1/4" inside diameter.



## SPECIFICATIONS

<b>Manufacturer</b>	Amana Tool
<b>Diameter</b>	3 13/32 in
<b>Cut Height, Length, or Width</b>	1 in
<b>Bore</b>	1/2 in & 3/4 in
<b>Replacement Parts</b>	47757 (42mm x 3/4 in x 9mm)
<b>Radius</b>	--
<b>Type</b>	Bevel
<b>Angle</b>	18.6 deg