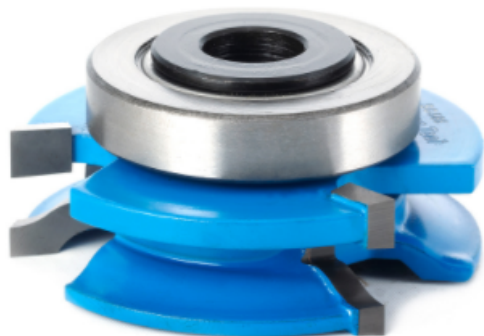


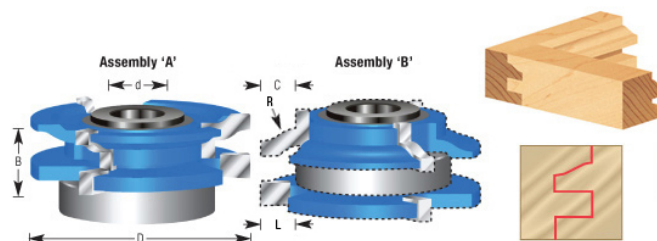
Edge of Arlington Saw & Tool, Inc.

124 South Collins
Arlington, TX 76010
Phone: 817-461-7171 • Fax: 817-795-6651
Toll Free: 888-461-7171
Email: info@eoasaw.com
Website: www.eoasaw.com



Item #SC586, Amana Tool Carbide-Tipped 3-Wing Roman Ogee Reversible Stile & Rail 2-13/32 x 1 in x 1/2 & 3/4 Bore for 1-Inch Material \$71.23

Thank you for shopping with us!
Designed for template shaping such as arched or cathedral doors, etc. Features a ball bearing center with a steel sleeve and is available with either 1/2," 3/4" , or 1-1/4" inside diameter.



SPECIFICATIONS

| | |
|-------------------------------------|-----------------------------|
| Manufacturer | Amana Tool |
| Diameter | 2 13/32 in |
| Cut Height, Length, or Width | 1 in |
| Bore | 1/2 in & 3/4 in |
| Replacement Parts | 47757 (42mm x 3/4 in x 9mm) |
| Radius | 5/16 in |
| Type | Roman Ogee |
| Angle | -- |