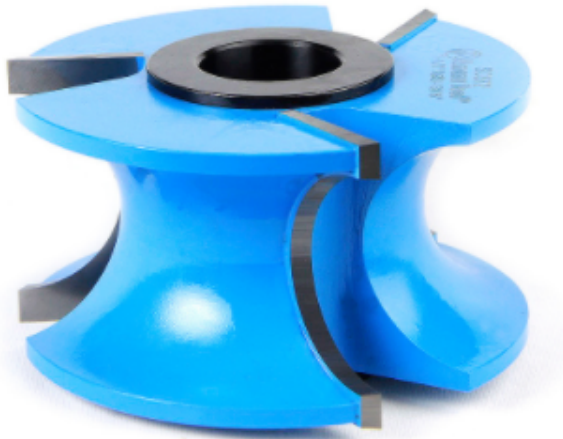


Edge of Arlington Saw & Tool, Inc.

124 South Collins
Arlington, TX 76010
Phone:817-461-7171 • Fax: 817-795-6651
Toll Free: 888-461-7171
Email: info@eoasaw.com
Website: www.eoasaw.com



**Item #SC572, Amana Tool Carbide-Tipped
3-Wing Bullnose 3/4" Radius x 1-1/2" in
Bead Radius x 3-13/16" Dia x 1-5/8" x 1 &
1-1/4 inch Bore
\$167.44**

Thank you for shopping with us!



SPECIFICATIONS

Manufacturer	Amana Tool
B1	1 1/2 in Bead
Cut Height, Length, or Width	2 in
Diameter (D1)	2 5/16 in
Note	***Rub collar for 1 1/4 in arbor only.
Radius	3/4 in