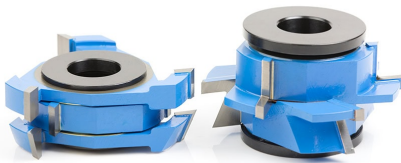


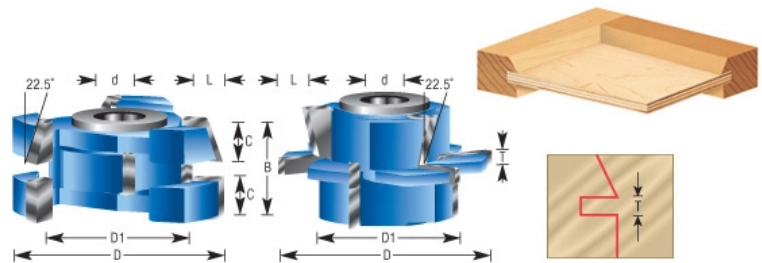
Edge of Arlington Saw & Tool, Inc.

124 South Collins
Arlington, TX 76010
Phone: 817-461-7171 • Fax: 817-795-6651
Toll Free: 888-461-7171
Email: info@eoasaw.com
Website: www.eoasaw.com

Item #SC566, Amana Tool 2-Piece Carbide Tipped 3-Wing Instile & Rail Adjustable Cabinet Door 22-1/2 Degree Bevel x 2-7/8 Dia x 1-1/16 to 1-21/64 x 1 & 1-1/4 Bore Set for 5/8 to 1-1/4 Material **\$420.67**



Thank you for shopping with us! Mission Style Flat Panel Cabinet Door Making Set. Shaker and Arts & Crafts. Designed to cut precise grooves to provide undersized plywood veneered panels with a snug rattle-free fit. Adjust the panel groove width 3/16" to 9/32" for 1/4" plywood. 5.5mm for undersized 1/4" plywood and 5.9mm for oversized 1/4" veneered plywood. Refer to Instile™ & Rail System Adjustable Tongue & Groove Router Bits Sets RC-4022 & 55421, 55431, 55441. For Material 5/8" - 1 1/4" (L) Depth of Groove 3/8" Optional Rub Collar C-005 (T) Width of Groove 3/16 to 9/32" Refer to Instile™ & Rail System Adjustable Tongue & Groove Insert Carbide Shaper Cutter Set 61218.



SPECIFICATIONS	
Manufacturer	Amana Tool
Diameter	2 7/8 in
Cut Height, Length, or Width	1 1/16 to 1 21/64 in
Bore	1 & 1 1/4 in
Diameter (D1)	2 1/8 in
Note	Rub collar for 1 1/4 in arbor only. Rub collar sold separately.
Profile	22.5 deg Bevel
Width	Width of Groove 3/16 to 9/32 in
Cut Depth	Depth of Groove 3/8 in