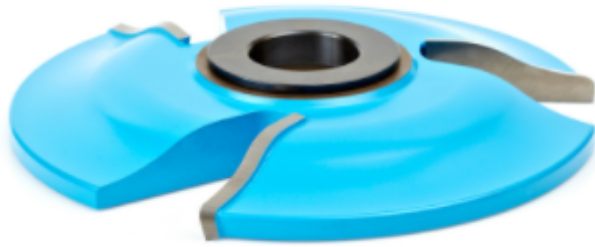


Edge of Arlington Saw & Tool, Inc.

124 South Collins
Arlington, TX 76010
Phone: 817-461-7171 • Fax: 817-795-6651
Toll Free: 888-461-7171
Email: info@eoasaw.com
Website: www.eoasaw.com



**Item #SC502, Amana Tool Carbide-Tipped
3-Wing Ogee Raised Panel 5-1/2 Dia x 5/8
x 1-15/32 x 1/8 Radius x 1 & 1-1/4 Bore for
3/4 Material**

\$145.64

Thank you for shopping with us!



SPECIFICATIONS

Manufacturer	Amana Tool
Diameter	5 1/2 in
Bore	1 in & 1 1/4 in
Cut Height, Length, or Width	5/8 in
Note	Rub collar for 1 1/4 in arbor only. Rub collars sold separately.
Radius	1 15/32 in
Type	Ogee
Angle	--