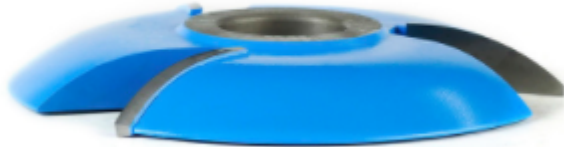


Edge of Arlington Saw & Tool, Inc.

124 South Collins
Arlington, TX 76010
Phone: 817-461-7171 • Fax: 817-795-6651
Toll Free: 888-461-7171
Email: info@eoasaw.com
Website: www.eoasaw.com



**Item #SC500, Amana Tool Carbide-Tipped 3-Wing Cove Raised Panel
5-1/2 Dia x 1-57/64 Radius x 1 & 1-1/4
Bore for 3/4 Material
\$145.64**

Thank you for shopping with us!

SPECIFICATIONS

Manufacturer	Amana Tool
Diameter	5 1/2 in
Bore	1 in & 1 1/4 in
Cut Height, Length, or Width	5/8 in
Note	Rub collar for 1 1/4 in arbor only. Rub collars sold separately.
Radius	1 57/64 in
R1/Radius	--
Type	Cove
Angle	--
R2/Radius	--
Rub Collar	C-017