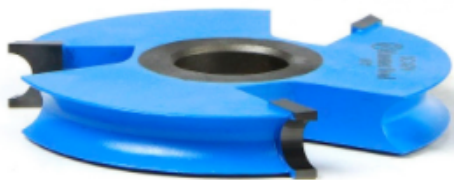


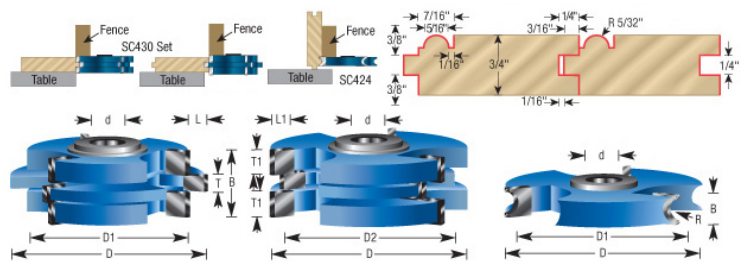
Edge of Arlington Saw & Tool, Inc.

124 South Collins
 Arlington, TX 76010
 Phone:817-461-7171 • Fax: 817-795-6651
 Toll Free: 888-461-7171
 Email: info@eoasaw.com
 Website: www.eoasaw.com



Item #SC424, Amana Tool Carbide-Tipped 3-Wing Wainscot with in Bead Cutters 3" Dia x 7/16" x 5/32" Radius x 1/2" & 3/4" Bore for 3/4" Material \$43.54

Thank you for shopping with us! Wainscot and paneling are great ways to add visual interest to walls. Paneling is used to cover an entire wall, while wainscot stops at the chair rail. Create a 5/16" diameter in Bead along the edges of the stock. Designed for 3/4" thick stock and creates an interlocking 1/4" tongue and groove joint for ease of assembly.



SPECIFICATIONS	
Manufacturer	Amana Tool
B1	5/16 in Bead
Cut Height, Length, or Width	7/16 in
Diameter (D1)	2 11/16 in
Note	**Rub collar for 3/4 in arbor only.
Radius	5/32 in