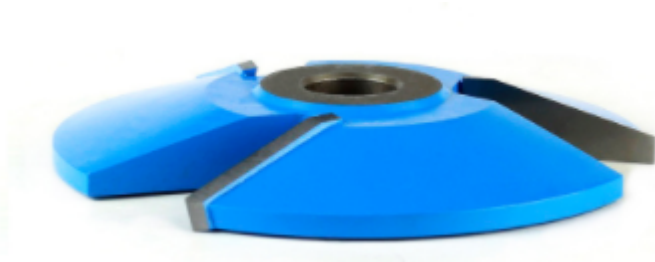


Edge of Arlington Saw & Tool, Inc.

124 South Collins
Arlington, TX 76010
Phone: 817-461-7171 • Fax: 817-795-6651
Toll Free: 888-461-7171
Email: info@eoasaw.com
Website: www.eoasaw.com



Item #SC404, Amana Tool Carbide-Tipped 3-Wing Traditional Raised Panel 17 Deg x 4-15/16 Dia x 5/8 x 1/2 & 3/4 Bore for 3/4 Material \$152.21

Thank you for shopping with us!

SPECIFICATIONS

Manufacturer	Amana Tool
Diameter	4 15/16 in
Bore	1/2 in & 3/4 in
Cut Height, Length, or Width	5/8 in
Note	Rub collar for 3/4 in arbor only. Rub collars sold separately.
Radius	--
R1/Radius	--
Type	Traditional
Angle	17 deg
R2/Radius	--
Rub Collar	C-004