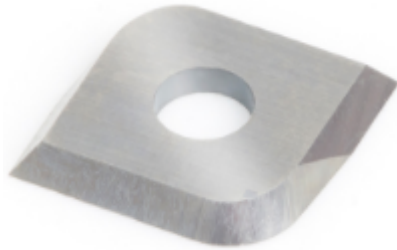


Edge of Arlington Saw & Tool, Inc.

124 South Collins
Arlington, TX 76010
Phone: 817-461-7171 • Fax: 817-795-6651
Toll Free: 888-461-7171
Email: info@eoasaw.com
Website: www.eoasaw.com



Item #RCK-502, Amana Tool Solid Carbide 4 Cutting Edges Insert Knife General Purpose Wood, Chipboard, Plywood 15 x 15 x 1.5mm
\$17.78

Thank you for shopping with us!

New grades now available for different material types such as softwood/hardwood, MDF/solid surface, and micro-finish for general purpose.

SPECIFICATIONS

| | |
|---------------------|--|
| Manufacturer | Amana Tool |
| Dimensions | 15 x 15 x 1.5mm |
| Material | General Purpose Wood, Chipboard, Plywood |
| Application | Various |
| Bevel | 45 deg |
| Note | -- |