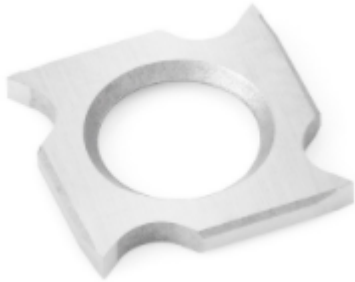


## Edge of Arlington Saw & Tool, Inc.

124 South Collins  
Arlington, TX 76010  
Phone: 817-461-7171 • Fax: 817-795-6651  
Toll Free: 888-461-7171  
Email: [info@eoasaw.com](mailto:info@eoasaw.com)  
Website: [www.eoasaw.com](http://www.eoasaw.com)

---



### **Item #RCK-19, Amana Tool Straight Solid Carbide Insert Knives: 4 Cutting Edges (Industrial)** **\$14.54**

Thank you for shopping with us!

New grades now available for different material types such as softwood/hardwood, MDF/solid surface, and micro-finish for general purpose.

| SPECIFICATIONS      |                                      |
|---------------------|--------------------------------------|
| <b>Manufacturer</b> | Amana Tool                           |
| <b>Dimensions</b>   | 18 x 18 x 2.5mm                      |
| <b>Material</b>     | Gen Purpose Wood, Chipboard, Plywood |
| <b>Application</b>  |                                      |
| <b>Bevel</b>        | 35 deg                               |
| <b>Note</b>         |                                      |