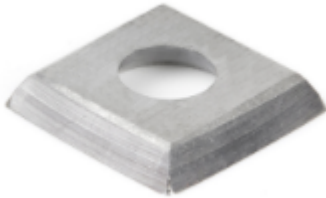


## Edge of Arlington Saw & Tool, Inc.

124 South Collins  
Arlington, TX 76010  
Phone:817-461-7171 • Fax: 817-795-6651  
Toll Free: 888-461-7171  
Email: [info@eoasaw.com](mailto:info@eoasaw.com)  
Website: [www.eoasaw.com](http://www.eoasaw.com)

---



### **Item #RCK-13, Amana Tool Straight Solid Carbide Insert Knives: 4 Cutting Edges, Round Edge \$9.34**

Thank you for shopping with us!

Cut Edge with Radius and Rounded Edge.

New grades now available for different material types such as softwood/hardwood, MDF/solid surface, and micro-finish for general purpose.

#### SPECIFICATIONS

<b>Manufacturer</b>	Amana Tool
<b>Dimensions</b>	15 x 15 x 2.5mm
<b>Edge(s)</b>	4 Cutting Edges with Radius, Rounded Corners & Chamfer
<b>Material</b>	General Purpose Wood, Chipboard, Plywood
<b>Part Descp.</b>	Solid Carbide Insert Replacement Knife Rounded Corners & Chamfer
<b>Radius</b>	150mm