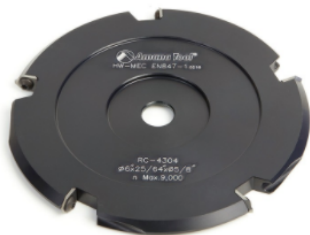


Edge of Arlington Saw & Tool, Inc.

124 South Collins
Arlington, TX 76010
Phone: 817-461-7171 • Fax: 817-795-6651
Toll Free: 888-461-7171
Email: info@eoasaw.com
Website: www.eoasaw.com



Item #RC-4304, Amana Tool Insert Carbide ACM 90° Double Edge V-Scoring 6 Inch Dia x 5T x 5/8 Bore Saw Blade

\$266.85

Thank you for shopping with us!

Designed for scoring Aluminum Composite (sandwich) Materials with 90° angle V-groove with flat bottom. Widely used for cladding many diverse exterior and interior applications. The long lasting durability of the material makes it an excellent choice for buildings, signage, displays, etc. Utilizes 4-sided carbide inserts.



Replacement Parts: Screw #67115 (5); Torx® key #5005 (included).

Excellent for scoring: Aluminum, Clay, Zinc & Wood Composite Panels; Aluminum Composite Materials (ACM); Aluminum Composite Panel (ACP)*; ALPOLIC® Copper Composite Material (CCM); Alucobond®; Alupanel®; Dibond®; Durabond**; e-panel™; Etalbond®; Phenolics; Plastic/Acrylic; Plexiglas®, TCM, Wood.

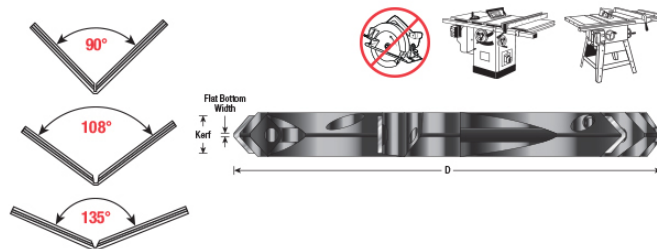
*ACP is a type of ACM flat panel that consists of two thin aluminum sheets bonded to a non-aluminum core. ACPs are frequently used for external cladding or facades of buildings, insulation, and signage.

**Durabond is a polyethylene core with 0.3mm colored aluminum sheet on either side, pre-finished requiring no decoration.

Warning: This set requires a custom zero clearance throat plate.

Warning: Not to be used with portable saws.

Warning: Before use, read saw blade safety guidelines in [Amana's catalog](#).



SPECIFICATIONS

Replacement Parts	RCK-48 Replacement Knife
Manufacturer	Amana Tool
Bore	5/8 in
Kerf	25/64 in
Teeth	5
Width	0.090 in Flat Bottom Width
Angle	90 deg