

## Edge of Arlington Saw & Tool, Inc.

124 South Collins  
Arlington, TX 76010  
Phone: 817-461-7171 • Fax: 817-795-6651  
Toll Free: 888-461-7171  
Email: [info@eoasaw.com](mailto:info@eoasaw.com)  
Website: [www.eoasaw.com](http://www.eoasaw.com)



### Item #MD12-105, Amana A.G.E. Series Non-Ferrous for Thin Walled Aluminum Saw Blades: TCG Grind \$131.70

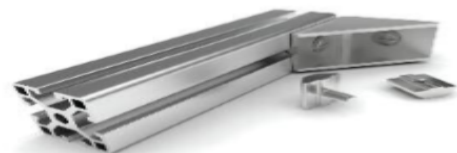
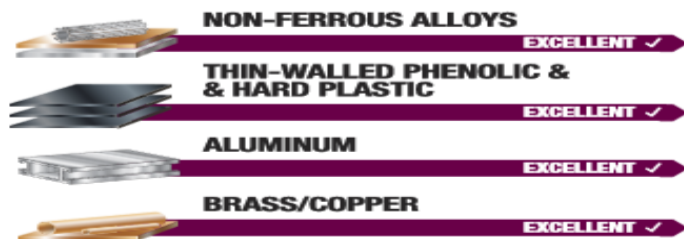
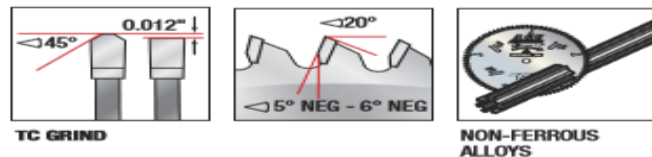
Thank you for shopping with us!

#### Superior-Finish cuts in aluminum & non-ferrous metals.

Designed specifically for cutting relatively thin walled (less than 1/4" thick) aluminum and non-ferrous extrusions and frames. Use a coolant or blade wax and clamp down the work piece when cutting non-ferrous metals.

MD12-105: One of Amana's most popular saw blades.

**Warning:** Never attempt to cut ferrous metals (steel, iron, etc.) with these blades.



## SPECIFICATIONS

<b>Manufacturer</b>	Amana Tool
<b>Diameter</b>	12 in
<b>Bore</b>	1 in
<b>Grind</b>	TC
<b>Hook Angle</b>	-5 deg

## SPECIFICATIONS

<b>Kerf</b>	0.126 in
<b>Note</b>	One of Amana's most popular saw blades.
<b>Pinholes</b>	--
<b>Plate</b>	0.098 in
<b>Teeth</b>	100