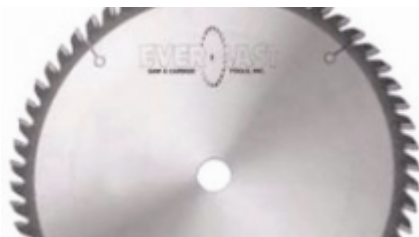


Edge of Arlington Saw & Tool, Inc.

124 South Collins
Arlington, TX 76010
Phone: 817-461-7171 • Fax: 817-795-6651
Toll Free: 888-461-7171
Email: info@eoasaw.com
Website: www.eoasaw.com



**Item #FT21060T5, Everlast 210mm Dia 60-Tooth
30mm Bore TC45 Grind 6° Hook 1.8mm Plate 2.4mm
Kerf Solid Surf Track Saw Blade - Metric Size
w/MICRO-5 Carbide Tip
\$100.26**

Thank you for shopping with us!

These high-quality industrial saws feature our Micro-5 carbide tips to provide 3 to 5 times longer life than standard carbide. Compatible with Festool and other track saw machines, these blades are ideal for cutting wood, melamine, aluminum, laminates, plastics, and solid surface materials.

Modified Triple Chip Grind - TC45 - This design starts with TCG configuration, but the STR (raker) tooth has small 45 degree chamfer. The addition of this chamfer, along with special clearances, provides the best possible finish on double face laminate and solid surface materials. This design provides good service life with excellent surface finish on table saws and radial arm saws.

SPECIFICATIONS	
Manufacturer	Everlast
Application	Solid Surface
Diameter	210 mm
Bore	30 mm
Grind	TC45
Kerf	0.095 in
Plate	0.072 in
Teeth	60
Hook Angle	6 deg