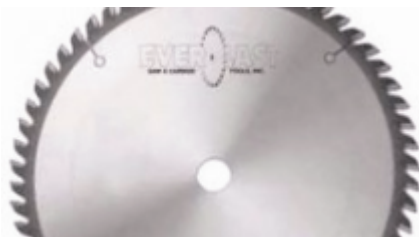


Edge of Arlington Saw & Tool, Inc.

124 South Collins
Arlington, TX 76010
Phone: 817-461-7171 • Fax: 817-795-6651
Toll Free: 888-461-7171
Email: info@eoasaw.com
Website: www.eoasaw.com



**Item #FT21052A5, Everlast 210mm Dia 52-Tooth
30mm Bore ATB Grind 8° Hook 1.8mm Plate 2.4mm
Kerf Double Face Laminate Track Saw Blade - Metric
Size w/MICRO-5 Carbide Tip
\$94.08**

Thank you for shopping with us!

These high-quality industrial saws feature our Micro-5 carbide tips to provide 3 to 5 times longer life than standard carbide. Compatible with Festool and other track saw machines, these blades are ideal for cutting wood, melamine, aluminum, laminates, plastics, and solid surface materials.

Alternate Top Bevel - ATB - Each tooth has top bevel typically between 10 and 20 degrees. Two teeth are required to provide a full kerf cut. Provides low cutting pressures, which reduce material tearing during the cutting process and provides a fine cutting finish. Best performance cross cutting.

| SPECIFICATIONS | |
|---------------------|----------------------|
| Manufacturer | Everlast |
| Application | Double Face Laminate |
| Diameter | 210 mm |
| Bore | 30 mm |
| Grind | ATB |
| Kerf | 0.095 in |
| Plate | 0.072 in |
| Teeth | 52 |
| Hook Angle | 8 deg |