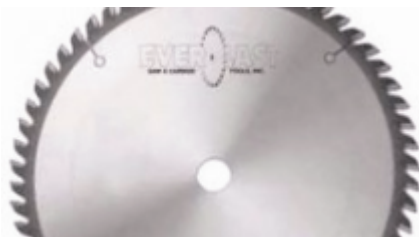


## Edge of Arlington Saw & Tool, Inc.

124 South Collins  
Arlington, TX 76010  
Phone: 817-461-7171 • Fax: 817-795-6651  
Toll Free: 888-461-7171  
Email: [info@eoasaw.com](mailto:info@eoasaw.com)  
Website: [www.eoasaw.com](http://www.eoasaw.com)



**Item #FT16048T5, Everlast 160mm Dia 48-Tooth  
20mm Bore TC45 Grind 5° Hook 1.6mm Plate 2.2mm  
Kerf Solid Surface Track Saw Blade - Metric Size  
w/MICRO-5 Carbide Tip**

**\$61.83**

Thank you for shopping with us!

These high-quality industrial saws feature our Micro-5 carbide tips to provide 3 to 5 times longer life than standard carbide. Compatible with Festool and other track saw machines, these blades are ideal for cutting wood, melamine, aluminum, laminates, plastics, and solid surface materials.

Modified Triple Chip Grind - TC45 - This design starts with TCG configuration, but the STR (raker) tooth has small 45 degree chamfer. The addition of this chamfer, along with special clearances, provides the best possible finish on double face laminate and solid surface materials. This design provides good service life with excellent surface finish on table saws and radial arm saws.

SPECIFICATIONS	
<b>Manufacturer</b>	Everlast
<b>Application</b>	Solid Surface
<b>Diameter</b>	160 mm
<b>Bore</b>	20 mm
<b>Grind</b>	TC45
<b>Kerf</b>	0.087 in
<b>Plate</b>	0.062 in
<b>Teeth</b>	48
<b>Hook Angle</b>	5 deg