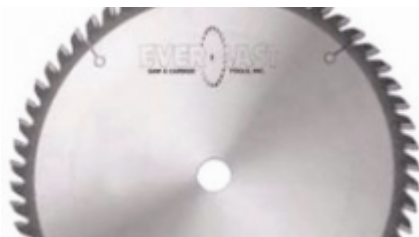


## Edge of Arlington Saw & Tool, Inc.

124 South Collins  
Arlington, TX 76010  
Phone:817-461-7171 • Fax: 817-795-6651  
Toll Free: 888-461-7171  
Email: [info@eoasaw.com](mailto:info@eoasaw.com)  
Website: [www.eoasaw.com](http://www.eoasaw.com)



**Item #FT16028A5, Everlast 160mm Dia 28-Tooth  
20mm Bore ATB Grind 15° Hook 1.6mm Plate 2.2mm  
Kerf Gen Purp Track Saw Blade - Metric Size  
w/MICRO-5 Carbide Tip  
\$54.27**

Thank you for shopping with us!

These high-quality industrial saws feature our Micro-5 carbide tips to provide 3 to 5 times longer life than standard carbide. Compatible with Festool and other track saw machines, these blades are ideal for cutting wood, melamine, aluminum, laminates, plastics, and solid surface materials.

Alternate Top Bevel - ATB - Each tooth has top bevel typically between 10 and 20 degrees. Two teeth are required to provide a full kerf cut. Provides low cutting pressures, which reduce material tearing during the cutting process and provides a fine cutting finish. Best performance cross cutting.

SPECIFICATIONS	
<b>Manufacturer</b>	Everlast
<b>Application</b>	General Purpose
<b>Diameter</b>	160 mm
<b>Bore</b>	20 mm
<b>Grind</b>	ATB
<b>Kerf</b>	0.087 in
<b>Plate</b>	0.062 in
<b>Teeth</b>	28
<b>Hook Angle</b>	15 deg