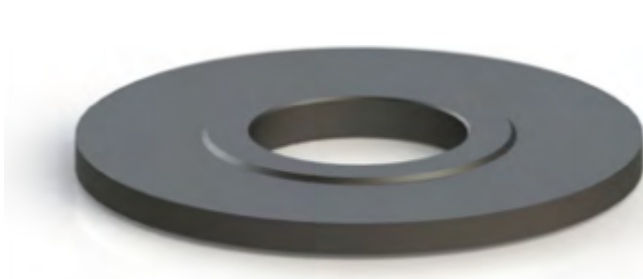


Edge of Arlington Saw & Tool, Inc.

124 South Collins
Arlington, TX 76010
Phone: 817-461-7171 • Fax: 817-795-6651
Toll Free: 888-461-7171
Email: info@eoasaw.com
Website: www.eoasaw.com



Item #AM 50-807, Freeborn Rub Spacers for Cope & Pattern - 3/4" Bore (Mini-Pro)

\$38.25

Thank you for shopping with us!

SPECIFICATIONS

Manufacturer	Freeborn Tool
Bore	3/4 in Bore (Mini-Pro)
Note	Optional rub spacer available for M-50 and P-10 series cope & pattern sets. Replaces center cutter on cope side.
Style	--
Width	--
Pack Quantity	
Part Descp.	Rub Spacers for Cope & Pattern
Thickness	--
Tongue	5.5 in x 1/2 in
Type	--