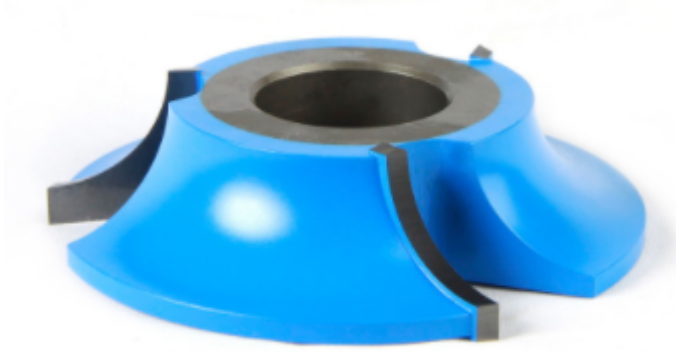


Edge of Arlington Saw & Tool, Inc.

124 South Collins
Arlington, TX 76010
Phone: 817-461-7171 • Fax: 817-795-6651
Toll Free: 888-461-7171
Email: info@eoasaw.com
Website: www.eoasaw.com



Item #A-30-114, Amana Tool Carbide-Tipped 3-Wing Heavy-Duty Corner Round 3/4" Radius x 4" Dia x 1" CH x 1-1/4 Bore
\$121.91

Thank you for shopping with us!
Designed for template shaping such as arched or cathedral doors, etc.

SPECIFICATIONS	
Manufacturer	Amana Tool
Bore	1 1/4 in
Cut Height, Length, or Width	1 in
Diameter (D1)	2 1/2 in
Note	--
Radius	3/4 in
Style	Corner Round