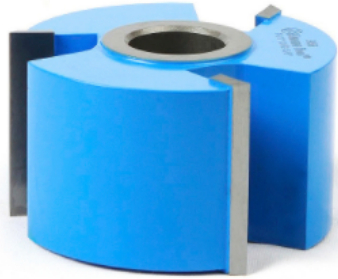


## Edge of Arlington Saw & Tool, Inc.

124 South Collins  
Arlington, TX 76010  
Phone:817-461-7171 • Fax: 817-795-6651  
Toll Free: 888-461-7171  
Email: [info@eoasaw.com](mailto:info@eoasaw.com)  
Website: [www.eoasaw.com](http://www.eoasaw.com)



### Item #956, Amana Tool Carbide-Tipped 3-Wing Straight Edge 2-5/8 Dia x 1-1/2 x 1/2 & 3/4 Bore \$95.83

Thank you for shopping with us!

Over 250 different cutters for all your shaping needs. Extra-thick carbide tips offer many resharpenings and longer tool life. RPM rating: 12,000 and under. Cutters are furnished with either 1/2" , 3/4" , or 1 1/4" bore.



Cutters with 3/4" bore include 2 reduction bushings (1/2" x 3/4" ), which will reduce the bore to 1/2" . Cutters with 1-1/4" bore include 2 reduction bushings (1" x 1-1/4" ) which will reduce the bore to 1" .



## SPECIFICATIONS

<b>Manufacturer</b>	Amana Tool
<b>Bore</b>	1/2 & 3/4 in
<b>Cut Height, Length, or Width</b>	1 1/2 in
<b>Note</b>	--