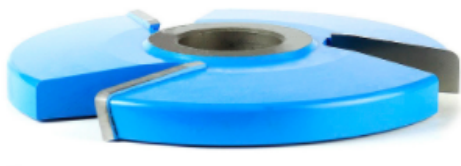


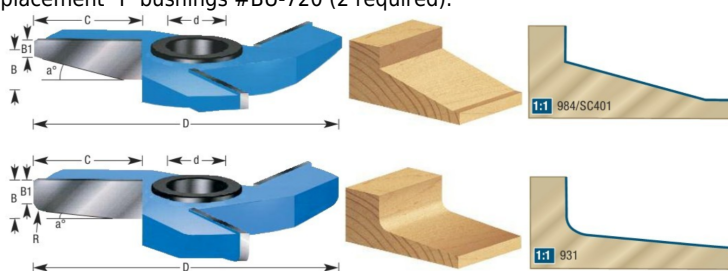
Edge of Arlington Saw & Tool, Inc.

124 South Collins
Arlington, TX 76010
Phone: 817-461-7171 • Fax: 817-795-6651
Toll Free: 888-461-7171
Email: info@eoasaw.com
Website: www.eoasaw.com



Item #931, Amana Tool Carbide-Tipped Traditional with Radius Raised Panel 5 Deg x 5/32 Radius x 5-1/2 Dia x 5/8 x 1 & 1-1/4 Bore for 5/8 Material Horizontal Panel Raising/Shear Face
\$136.12

Thank you for shopping with us!
Reveal (C) shown on these tools reflects the total length of cut. Therefore, you must deduct 3/8" (usually) for allowing the panel to recess into the frame.
Replacement 'T' bushings #BU-720 (2 required).



SPECIFICATIONS

Manufacturer	Amana Tool
Bore	1 in & 1 1/4 in
Cut Height, Length, or Width	5/8 in
Replacement Parts	T Bushing BU-720 (2 required)
Note	Rub collar for 1 1/4 in arbor only. Rub collar sold separately
Radius	5/32 in
Rub Collar	C-017
Type	Traditional
Angle	5 deg