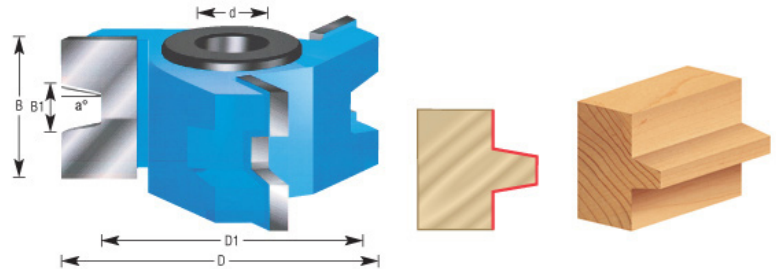
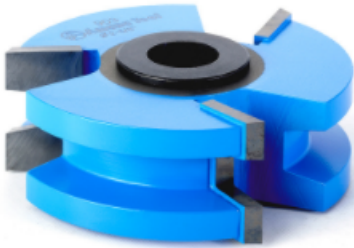


Edge of Arlington Saw & Tool, Inc.

124 South Collins
Arlington, TX 76010
Phone: 817-461-7171 • Fax: 817-795-6651
Toll Free: 888-461-7171
Email: info@eoasaw.com
Website: www.eoasaw.com

Item #903, Amana Tool Carbide-Tipped 3-Wing Wedge Tongue 2-5/8 Dia x 15/16 x 1/2 & 3/4 Bore \$69.69

Thank you for shopping with us!



SPECIFICATIONS

Manufacturer	Amana Tool
Diameter	2 5/8 in
Note	Rub collar for 3/4 in arbor only. 1/4 in diameter pin fits 2 in depth cutters 1/2 in & larger.
B1	11/32 in
Cut Height, Length, or Width	15/16 in
Rub Collar	C-010
Angle	9 deg
Replacement Parts	--
Diameter (D1)	2 in