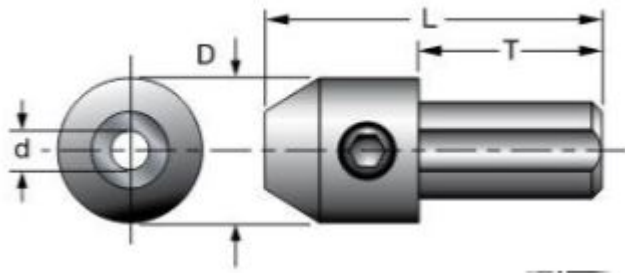


Edge of Arlington Saw & Tool, Inc.

124 South Collins
Arlington, TX 76010
Phone: 817-461-7171 • Fax: 817-795-6651
Toll Free: 888-461-7171
Email: info@eoasaw.com
Website: www.eoasaw.com



Item #7135, Freud 10mm Drill Adapter \$8.38

Edge of Arlington offers free shipping in the United States when you choose flat rate shipping. Use these adapters with solid carbide drill bits for multiple spindle boring machines. The 10mm x 20mm shank is compatible with most boring machines. Application: Converts [Freud Solid Carbide Drill Bits](#) as well as other manufacturers' bits for use in automatic and manual multi-spindle boring machines.

SPECIFICATIONS

| | |
|-------------------------|------------------------|
| Inside Diameter | 3.5 mm |
| Outside Diameter | 15mm |
| Shank | 10mm Dia / 19mm Length |
| Overall Length | 35 mm |
| Manufacturer | Freud Tools |