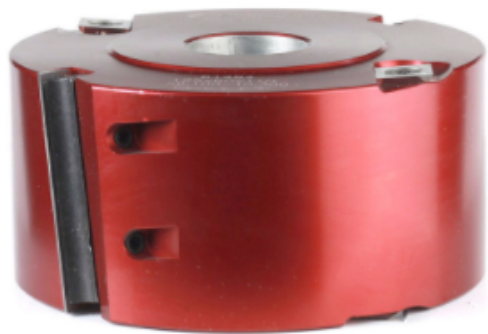


## Edge of Arlington Saw & Tool, Inc.

124 South Collins  
Arlington, TX 76010  
Phone: 817-461-7171 • Fax: 817-795-6651  
Toll Free: 888-461-7171  
Email: [info@eoasaw.com](mailto:info@eoasaw.com)  
Website: [www.eoasaw.com](http://www.eoasaw.com)

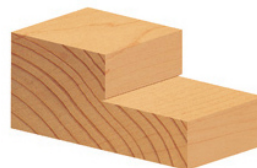
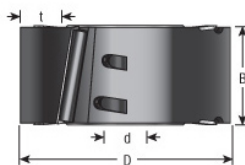


### Item #61485, Amana Tool Insert Carbide Shear Rabbeting 150mm (5-7/8) Dia x 60mm (2-3/8) x 1-1/4 Bore Aluminum (Industrial) \$206.01

Thank you for shopping with us! Cutterhead bodies available in hard wearing aluminum or steel, complete with shear angle tungsten carbide knives and scorer. Suitable for producing various thickness rabbets in softwood, hardwood, and man-made boards (with or without coating) on a spindle molder. Shear angle reduces tear-out and improves quality of cut. #s 61484 & 61485: Aluminum



Repl. Knife



## SPECIFICATIONS

<b>Manufacturer</b>	Amana Tool
<b>Bore</b>	1 1/4 in
<b>Cut Height, Length, or Width</b>	60 mm
<b>Note</b>	Aluminum
<b>Teeth</b>	2+4
<b>Diameter</b>	5 7/8 in
<b>Knives</b>	ICK-60, HCK-70
<b>Part Descp.</b>	Shear Rabbeting
<b>Replacement Parts</b>	Replacement Screws: HCK-70 #67154, ICK-30 & ICK-50 #67301, ICK-60 #67142
<b>RPM</b>	5,200 to 8,600