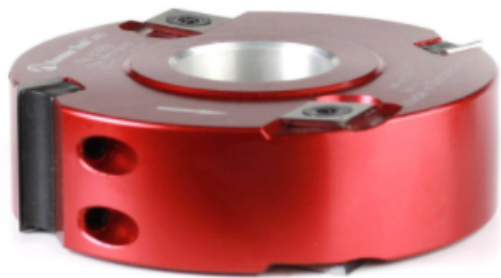


## Edge of Arlington Saw & Tool, Inc.

124 South Collins  
Arlington, TX 76010  
Phone: 817-461-7171 • Fax: 817-795-6651  
Toll Free: 888-461-7171  
Email: [info@eoasaw.com](mailto:info@eoasaw.com)  
Website: [www.eoasaw.com](http://www.eoasaw.com)



### Item #61460, Amana Tool Insert Carbide Aluminum Rabbet 100mm (4 in) Dia x 30mm (1-3/16) x 1-1/4 Bore (Industrial)

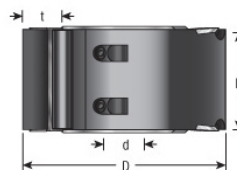
**\$163.71**

Thank you for shopping with us! Cutterhead bodies available in hard wearing aluminum or steel, complete with shear angle tungsten carbide knives and scorer for improved finish. Suitable for producing various thickness rabbets in softwood, hardwood, and man-made boards (with or without coating) on a spindle molder. #s 61464,



61460, 61462 & 61465: Aluminum

Repl. Knife



## SPECIFICATIONS

<b>Manufacturer</b>	Amana Tool
<b>Bore</b>	1 1/4 in
<b>Cut Height, Length, or Width</b>	30 mm
<b>Note</b>	Aluminum
<b>Teeth</b>	2+4
<b>Diameter</b>	4 in
<b>Knives</b>	ICK-30, HCK-70
<b>Part Descp.</b>	Rabbeting
<b>Replacement Parts</b>	--
<b>RPM</b>	7,600 to 12,900