

Edge of Arlington Saw & Tool, Inc.

124 South Collins

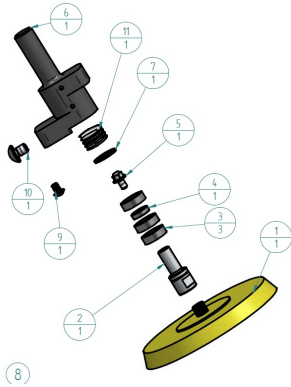
Arlington, TX 76010

Phone: 817-461-7171 • Fax: 817-795-6651

Toll Free: 888-461-7171

Email: info@eoasaw.com

Website: www.eoasaw.com



Item #61299-PAD-4, Amana Timberline Replacement 4" PAD for In Sand sander #61299

\$34.97

Thank you for shopping with us! **WARNING!** The max RPM for the 61299 Dynamically Balanced non Random Orbital Sander is 8,000. Working with higher rotation speed can cause damage to the machine spindle. Please note: After one hour of sanding, stop and turn the power off on your CNC machine. Inspect to ensure the tool spins freely. Repeat after each hour of sanding. Designed for CNC Sanding: Wood and Resin. Recommended running parameters (depending on application) 4,000 – 7,000 RPM 200 – 400 IPM (5,080 – 10,160 mm/min) Hard spring depth of cut: 0.04" (1.01mm) Soft spring depth of cut: 0.08" (2.03mm) This CNC orbital sanding tool is designed to use with any 4" sanding disc (included) according to the finish required. Full set of instructions included. **UNDERSTANDING THE SANDER BEFORE USE:** The In-Sand™ sander comes with two different springs; the hard spring comes installed on the tool and the soft spring is included in the package. The springs look very similar, but by compressing the springs you can feel the difference between the stiffness of them. A spring inside the sander ensures constant pressure is applied to the sanding pad. The amount of pressure is determined by setting the "depth of cut" in your software. Do not exceed the maximum spring compression by setting your cut depth too deep, for best results use our recommended settings. The hard spring applies a maximum pressure of 22lbs (10kg) with a maximum compression of 0.078" (2mm). The recommended "depth of cut" setting is 0.04" (1.01mm). This spring is best used for flat surfaces. The sander should not be used to flatten surfaces, the surface must already be flat before sanding. The soft spring applies a maximum pressure of 4.4lbs (2kg) with a maximum compression of 0.1" (2.6mm). The recommended "depth of cut" setting is 0.08" (2.03mm). This spring is best used for rough, but relatively flat surfaces. The maximum deviation in the surface cannot exceed the maximum compression of the spring. On uneven surfaces, it will follow the ups and downs of the material, which may be helpful in certain cases like using rough sawn wood where you want to smooth it out, but not remove the rough sawn look, for example. **Pad Installation & Replacement** 1. Hold the spindle with the key (part #6) using the flats on the spindle. 2. Remove spindle (part #2), ring (part #3) and spring (part #4). 3. Clean out any dust and swap the spring if necessary (part #4). 4. Reassemble ensuring the ring (part #3) is installed with the groove seated toward the top bearing of the spindle (part #2). 5. Press the spindle into housing, and tighten the screw (part #1). 6. (Part #5) helps to balance the tool. It is properly adjusted from the factory, do NOT attempt to remove it! The In-Sand™ is a non-random orbital sander, which operates in a fixed, predictable motion. The sander is dynamically balanced from the factory, using Part #5 as the balancing element. **DO NOT ADJUST THIS PART.** If the red mark on Part #5 is not aligned properly to the red mark on the tool body, please contact the Amana Tool® technical support team. **Sander Use Instructions:** The sander is NOT for flattening material, the material should be flat before using the sander. The maximum rotation speed is 8,000 RPM, we recommend 4,000-7,000 RPM with a feed rate of 200-400 IPM (5,080-10,160mm/min), depending on application. When setting the depth of cut, the black line on the spindle must be visible within the flat surface shown in Detail A while running. The machine should always be moving while the spindle is on and the sander is in use, do not stop the feed with the spindle still rotating. At least 60% of the sander must remain in contact with the material at all times after the initial plunge onto the material to prevent the spring from extending and crashing when attempting to come back on the material. Be mindful of voids in a wood slab large enough for the sander to drop into, these must be taken into account in your design software. While spinning the sanding diameter is bigger than the pad diameter by 0.125". Ensure the sander is at least 0.125" from any areas higher than the surface being sanded. **Maintenance Instructions & Spring Replacement** After every few hours of use, it is a good idea to clean and inspect the inside of the sander to ensure proper operation. Follow the below steps. Remove screw (part #1) using the included T15 TORX key. Remove spindle (part #2), ring (part #3) and spring (part #4). Clean out any dust and swap the spring if necessary (part #4). Reassemble ensuring the ring (part #3) is installed with the groove seated toward the top bearing of the spindle (part #2). Press the spindle into housing, and tighten the screw (part #1). (Part #5) helps to balance the tool. It is properly adjusted from the factory, do NOT attempt to remove it! **Guidelines For Tool Measurement** Before measuring the tool length on the CNC machine, the spindle needs to be locked to ensure an accurate measurement without the spring compressing. Hold the sander with the pad facing down, ensuring the pad is able to fully extend. Screw in the locking pin (part #7) by hand into the hole closest to the sanding pad as shown in Detail B, do not overtighten. Measure the length of the tool using a touch off probe or other method for your machine. After measuring, remove the pin (part #7) before operating the sander. Includes 20 Replacement Sanding Discs: 10 pack of 80 grit (Medium) 10 pack of 120 grit (Fine) Knowing which grit sandpaper to use depends on the type of job and what step in the process you are in. The lower the grit numbers, the coarser the disc will be, and the higher the grit, the finer it will be. 40 grit: Coarse 80 grit: Medium 100 grit: Medium 120 grit: Fine 220 grit: Fine 440 grit: Extra Fine

SPECIFICATIONS	
Manufacturer	Amana Tool
Diameter	3-55/64 in (98mm)
Includes	Replacement 4in PAD for In Sand sander #61299
Length	--
Overall Length	--
RPM	--
Shank	--
Thread Size/Length	5/16 in -24T