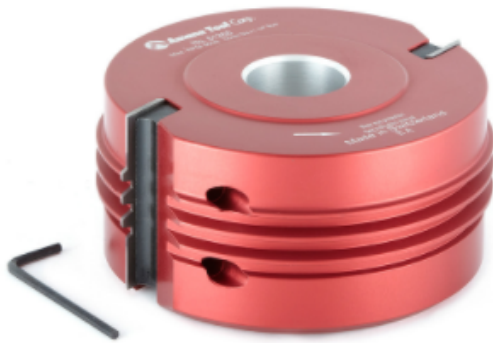


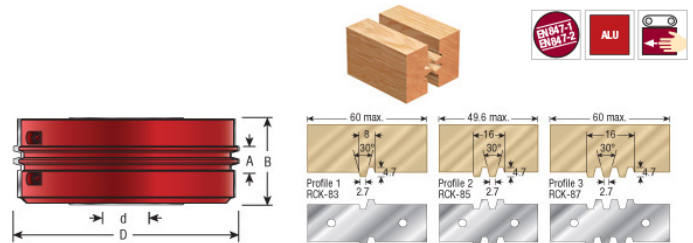
## Edge of Arlington Saw & Tool, Inc.

124 South Collins  
Arlington, TX 76010  
Phone: 817-461-7171 • Fax: 817-795-6651  
Toll Free: 888-461-7171  
Email: [info@eoasaw.com](mailto:info@eoasaw.com)  
Website: [www.eoasaw.com](http://www.eoasaw.com)



### Item #61264, Amana Tool Insert Carbide Steel Glue Joint Cutter 140mm (5-1/2) Dia x 50mm (2 in) x 1-1/4 Bore (Industrial) \$273.22

Thank you for shopping with us! Cutterhead bodies in hard wearing aluminum or steel, complete with tungsten carbide knives. Suitable for producing 'finger-style' reversible glue joints in softwood, hardwood, and man-made boards on a spindle moulder.



## SPECIFICATIONS

<b>Diameter</b>	5 1/2 in
<b>Bore</b>	1 1/4 in
<b>Cut Height, Length, or Width</b>	2 in
<b>Manufacturer</b>	Amana Tool
<b>RPM</b>	5,400 to 8,800
<b>Knives</b>	RCK-85