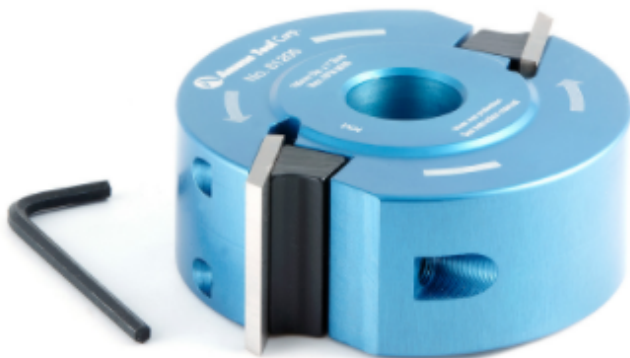


Edge of Arlington Saw & Tool, Inc.

124 South Collins
Arlington, TX 76010
Phone: 817-461-7171 • Fax: 817-795-6651
Toll Free: 888-461-7171
Email: info@eoasaw.com
Website: www.eoasaw.com



Item #61200, Amana Tool Profile Pro™ Aluminum Cutterhead 100mm (4 in) Dia x 40mm (1-1/2) x 1 in Bore (for 40mm Knife System)

\$119.60

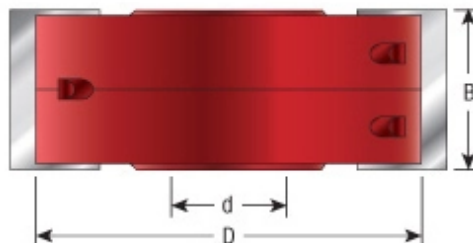
Thank you for shopping with us!

61068 includes 2 bushings (BU-561) 3/4" to 1/2" . Part #'s (knives) beginning with CT are carbide-tipped and will not fit in the 61068 cutterhead.

Profile Pro™ red anodized aluminum alloy cutterhead.

[40mm Knives.](#)

[T-Bushings](#)



SPECIFICATIONS

Bore	1 in
B1	
Cut Height, Length, or Width	40 mm
Manufacturer	Amana Tool