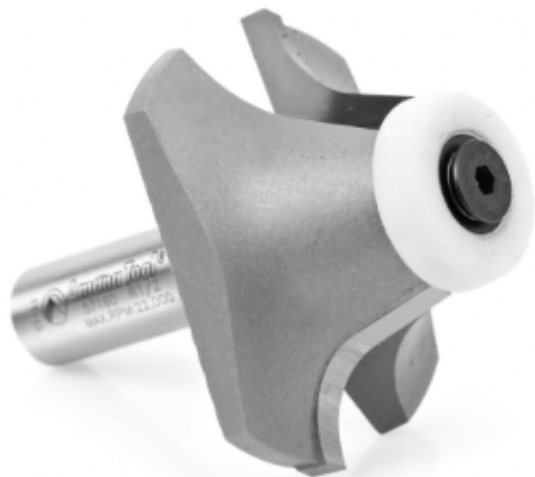


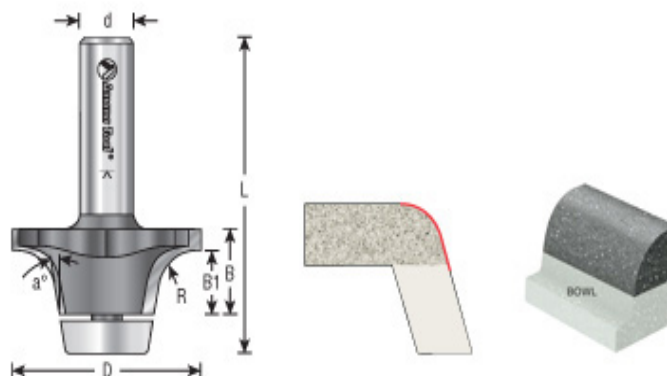
## Edge of Arlington Saw & Tool, Inc.

124 South Collins  
Arlington, TX 76010  
Phone:817-461-7171 • Fax: 817-795-6651  
Toll Free: 888-461-7171  
Email: [info@eoasaw.com](mailto:info@eoasaw.com)  
Website: [www.eoasaw.com](http://www.eoasaw.com)



### Item #57160, Amana Tool Carbide-Tipped Undermount Bowl Solid Surface for Corian® Bowls 2-1/8" Dia x 1" x 17 Deg x 1/2" Shank w/ Ultra-Glide™ Ball Bearing Guide **\$134.44**

Thank you for shopping with us! For Corian® Bowl numbers: 874S, 810AS, 850, 857B, 859S, 871S, 872S, 891S, 893S These bits are designed specifically for use in undermount installations of Corian® bowl #874S. They trim and profile the countertop edges after the bowl is mounted.



SPECIFICATIONS	
<b>Manufacturer</b>	Amana Tool
<b>Diameter</b>	2 1/8 in
<b>Cut Height, Length, or Width</b>	1 in
<b>Cut Depth</b>	3/4 in
<b>Replacement Parts</b>	Includes #5009 1/8 in hex key and #67146 special flathead machine screw
<b>Flute</b>	2 w/Nylon Bearing
<b>Bearing(s)</b>	Ultra-Glide bearing assembly #47731
<b>Note</b>	Replacement Ultra-Glide; bearing assembly #47731 (includes #5009 1/8 in hex key and #67146 special flathead machine screw).
<b>Overall Length</b>	2 7/8 in
<b>Radius</b>	1/2 in

## SPECIFICATIONS

<b>Shank</b>	1/2 in
<b>Type</b>	Roundover
<b>Usage/System</b>	For Corian Bowls
<b>Angle</b>	17 deg