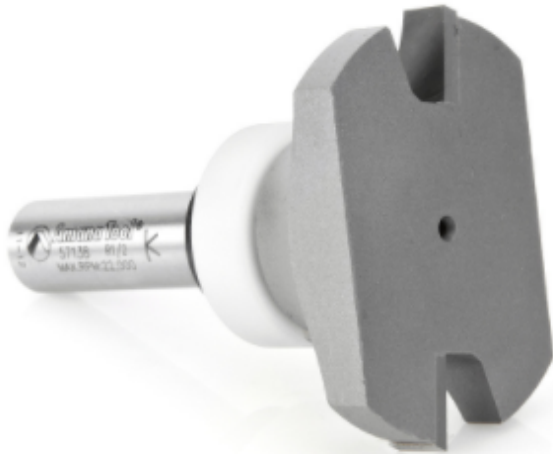


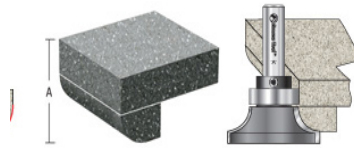
## Edge of Arlington Saw & Tool, Inc.

124 South Collins  
Arlington, TX 76010  
Phone: 817-461-7171 • Fax: 817-795-6651  
Toll Free: 888-461-7171  
Email: [info@eoasaw.com](mailto:info@eoasaw.com)  
Website: [www.eoasaw.com](http://www.eoasaw.com)



### Item #57138, Amana Tool Carbide-Tipped Round Under Solid Surface 2-1/8 Dia x 3/4 x 1/2 Radius x 1/2 Inch Shank **\$98.70**

Thank you for shopping with us!



Round the lower edge of a counter with the router resting on the upper surface. No need to turn over the heavy material. This tool is especially useful for "job-site" work. (To complete a full 180° bullnose on 1/2", 1", 1 1/2", or 2" thick stock, use the corner rounding bit with the radius bearing.) Furnished with Ultra-Glide™ non-marring Delrin®-sleeved ball bearing guide.

## SPECIFICATIONS

<b>Manufacturer</b>	Amana Tool
<b>Diameter</b>	2 1/8 in
<b>Cut Height, Length, or Width</b>	3/4 in
<b>Cut Depth</b>	1 in
<b>Replacement Parts</b>	Collar #47740
<b>Flute</b>	2 w/Bearing
<b>Bearing(s)</b>	Ultra-Glide Bearing #47737
<b>Overall Length</b>	2 7/8 in
<b>Radius</b>	1/2 in
<b>RPM</b>	Max 14,000
<b>Shank</b>	1/2 in