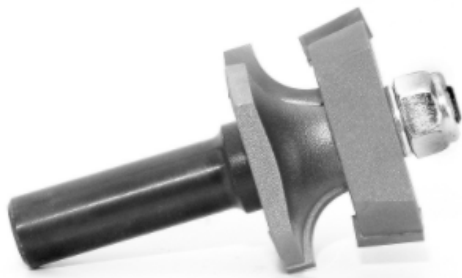


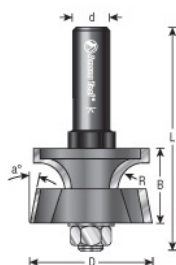
Edge of Arlington Saw & Tool, Inc.

124 South Collins
Arlington, TX 76010
Phone: 817-461-7171 • Fax: 817-795-6651
Toll Free: 888-461-7171
Email: info@eoasaw.com
Website: www.eoasaw.com



Item #55300, Amana Tool Carbide-Tipped Door Lip Assembly 3/8 Radius x 10 Deg x 1-9/16 Dia x 1/2 Shank \$74.40

Thank you for shopping with us! Amana Tool Carbide-Tipped Door Lip Assembly 3/8 Radius x 10 Deg x 1-9/16 Dia x 1/2 Shank Mill the edges of doors and drawer fronts with this assembly, rounding the show edge and simultaneously forming a rabbet with a tapered shoulder on the back edge. Works on straight stock from 5/8" through 1" in thickness. Must be used in a table-mounted router.



SPECIFICATIONS

Manufacturer	Amana Tool
Diameter	1 9/16 in
Cut Height, Length, or Width	1 in
Replacement Parts	3/8 in Corner Round Cutter #55302, 10 in Taper Rabbet Cutter #55304, 1/2 in Shank Arbor w/Nut #47612
Overall Length	3 in
Flute	2
Radius	3/8 in
Shank	1/2 in
Type	Corner Round & Taper Rabbet
Angle	10 deg