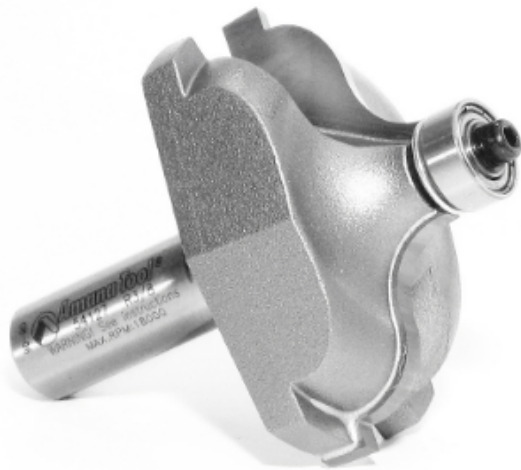


Edge of Arlington Saw & Tool, Inc.

124 South Collins
Arlington, TX 76010
Phone:817-461-7171 • Fax: 817-795-6651
Toll Free: 888-461-7171
Email: info@eoasaw.com
Website: www.eoasaw.com



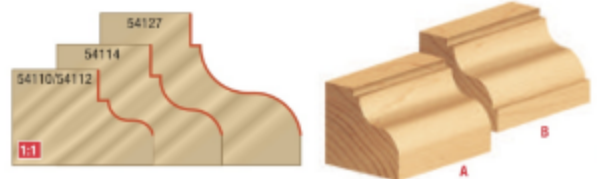
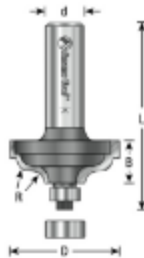
Item #54127, Amana Tool Ogee Fillet Carbide-Tipped 2 1/4" Dia x 3/8" Radius x 15/16" CH x 1/2" Shank 2-Flute w/Ball Bearing Guide \$119.59

Thank you for shopping with us!

Amana Tool Ogee Fillet Carbide-Tipped 2 1/4" Dia x 3/8" Radius x 15/16" CH x 1/2" Shank 2-Flute w/Ball Bearing Guide

This ogee pattern has a step at the end of the concave portion of the curve. Using the optional 3/8" bearing produces a profile with a fillet at the convex end of the curve. Use in a handheld or table-mounted router.

A - Standard 1/2" bearing #47706 (included); B - Optional 3/8" bearing #47702 (order separately).



Warning: Maximum RPM = 18,000

SPECIFICATIONS

Manufacturer	Amana Tool
Diameter	2 1/4 in
Cut Height, Length, or Width	15/16 in
Flute	2 w/Bearing
Bearing(s)	Standard 1/2 in bearing #47706 (included); Optional 3/8 in bearing #47702 (order separately).
Overall Length	2 7/8 in
Radius	3/8 in
Shank	1/2 in
RPM	Warning: Maximum RPM = 18,000.