

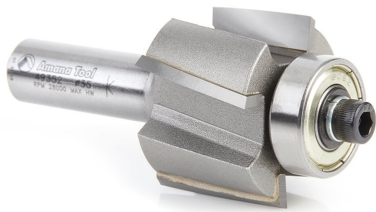
Edge of Arlington Saw & Tool, Inc.

124 South Collins
Arlington, TX 76010
Phone: 817-461-7171 • Fax: 817-795-6651
Toll Free: 888-461-7171
Email: info@eoasaw.com
Website: www.eoasaw.com

Item #49352, Amana Tool Multi-Rabbet Five Different Rabbet Depths 1-3/8 Dia x 1 x 1/2 Inch Shank 4 Flute Router Bit

\$84.00

Thank you for shopping with us! The Multi-Rabbet bit steps in 1/16" increments from a 1/4" cut width to 1/2", simply by switching ball-bearing guides. Five different bearings are provided. Depth of cut capacity of 1/2". Use in a handheld or table-mounted router.



SPECIFICATIONS

Manufacturer	Amana Tool
Cut Depth	1/4"
Diameter	1 3/8 in
Cut Height, Length, or Width	7/16"
Bearing(s)	47751, 47701, 47712, 47714, 47708
Flute	
Overall Length	
Shank	