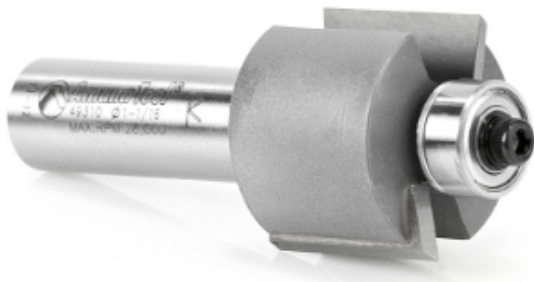


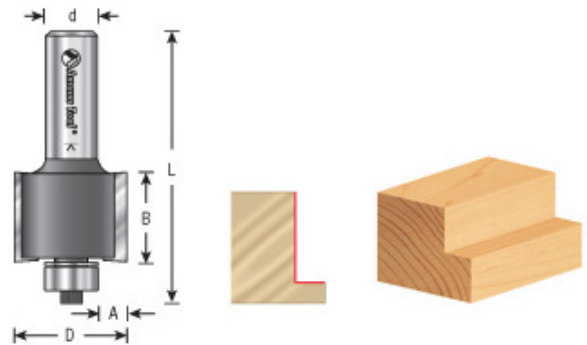
Edge of Arlington Saw & Tool, Inc.

124 South Collins
Arlington, TX 76010
Phone: 817-461-7171 • Fax: 817-795-6651
Toll Free: 888-461-7171
Email: info@eoasaw.com
Website: www.eoasaw.com



Item #49310, Amana Tool Special Rabbet Bit 9/32" Depth x 1-1/16" Dia x 7/8" CH x 1/2" Shank 2-Flute w/Ball Bearing Guide \$52.05

Thank you for shopping with us! Amana Tool Special Rabbet Bit 9/32" Depth x 1-1/16" Dia x 7/8" CH x 1/2" Shank 2-Flute w/Ball Bearing Guide Designed for the "smart clip" backslash system. Depth of rabbet 9/32" Replacement bearing #47706



SPECIFICATIONS

Bearing(s)	47706, 3/16 ID x 1/2 OD x .195 Thick
Cut Depth	Depth of rabbet 9/32"
Cut Height, Length, or Width	7/8 in
Flute	2 w/Bearing
Manufacturer	Amana Tool
Overall Length	2 5/8 in
Shank	1/2 in