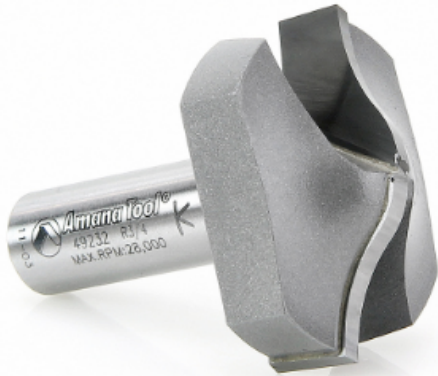


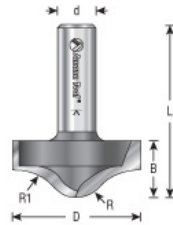
Edge of Arlington Saw & Tool, Inc.

124 South Collins
Arlington, TX 76010
Phone:817-461-7171 • Fax: 817-795-6651
Toll Free: 888-461-7171
Email: info@eoasaw.com
Website: www.eoasaw.com



Item #49232, Amana Tool Carbide-Tipped Plunge Raised & Ogee 3/8" Radius x 1-5/8" Dia x 23/32" x 1/2" Shank \$72.04

Thank you for shopping with us! Amana Tool Carbide-Tipped Plunge Raised & Ogee 3/8" Radius x 1-5/8" Dia x 23/32" x 1/2" Shank Rout decorative grooves on solid wood or MDF panels and surfaces with a handheld or CNC router. Form edges using an edge guide.



SPECIFICATIONS

Manufacturer	Amana Tool
Cut Height, Length, or Width	23/32 in
Flute	2
Overall Length	2 3/16 in
Radius	3/8 in
Shank	1/2 in