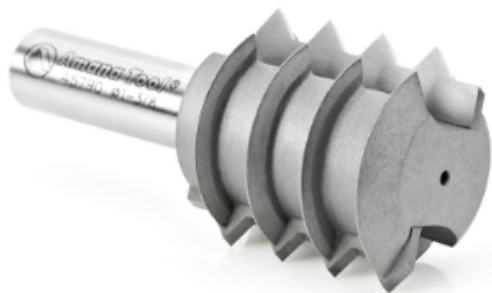


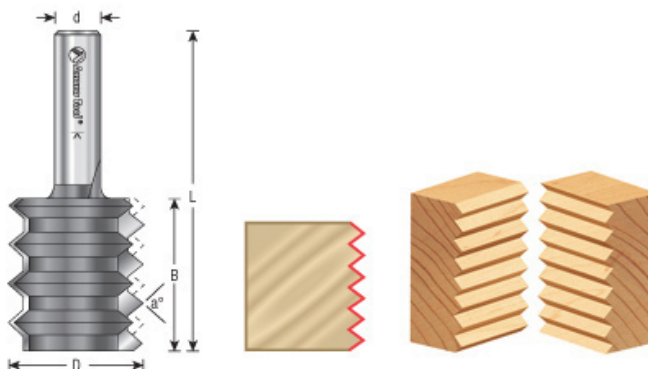
## Edge of Arlington Saw & Tool, Inc.

124 South Collins  
Arlington, TX 76010  
Phone: 817-461-7171 • Fax: 817-795-6651  
Toll Free: 888-461-7171  
Email: [info@eoasaw.com](mailto:info@eoasaw.com)  
Website: [www.eoasaw.com](http://www.eoasaw.com)



### Item #45790, Amana Tool Raised Panel 'V' Joint 80 Deg x 1-3/8" Dia x 1-37/64" CH x 1/2" Shank \$84.98

Thank you for shopping with us! Amana Tool Raised Panel 'V' Joint 80 Deg x 1-3/8" Dia x 1-37/64" CH x 1/2" Shank The principle benefit of this glue-joint bit is that the glue seam is far less evident on the bevels of raised panels. Equally important, setup is fast. Cut one half of each joint with the bit at any height. Simply raise or lower the bit 3/32" before cutting the mates. As with all glue-joint bits, the cutter profile expands the edge-to-edge glue surface; more important, it produces the precise surface alignment that's essential for fast glueups. For best results, use in a router table.



#### SPECIFICATIONS

<b>Manufacturer</b>	Amana Tool
<b>Cut Height, Length, or Width</b>	1 37/64 in
<b>Overall Length</b>	3 1/16 in
<b>Shank</b>	1/2 in
<b>Angle</b>	80 deg