

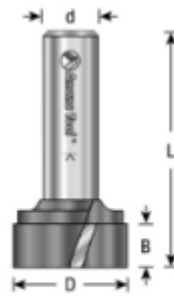
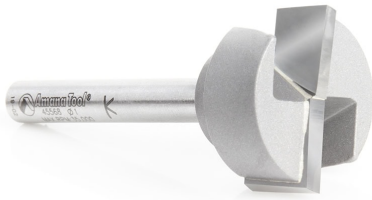
## Edge of Arlington Saw & Tool, Inc.

124 South Collins  
Arlington, TX 76010  
Phone: 817-461-7171 • Fax: 817-795-6651  
Toll Free: 888-461-7171  
Email: [info@eoasaw.com](mailto:info@eoasaw.com)  
Website: [www.eoasaw.com](http://www.eoasaw.com)

### Item #45568, Amana Tool Mortising Carbide-Tipped Bottom Cleaning / Spoilboard 1 Dia x 7/16 x 1/4 Inch Shank Upshear Design

**\$41.29**

Thank you for shopping with us! This bit is intended for broad, very shallow cuts where an exceptional finish is desired. Use it to clean up previously cut dados and grooves, or for surfacing cuts. The up-shear configuration improves chip removal, while the cutting edge orientation produces a smooth surface. Note: A proper mortising bit should have a large gullet (as shown in the image below) between the two flutes. This allows greater chip clearance and removal.



## SPECIFICATIONS

<b>Manufacturer</b>	Amana Tool
<b>Diameter</b>	1 in
<b>Cut Height, Length, or Width</b>	7/16 in
<b>Flute Geometry</b>	Upcut
<b>Flute</b>	2
<b>Overall Length</b>	2 1/2 in
<b>Shank</b>	1/4 in