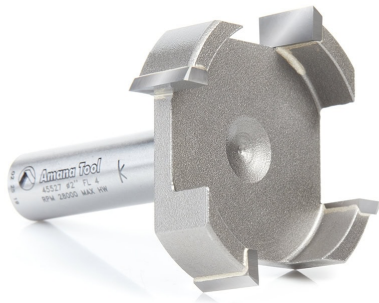


## Edge of Arlington Saw & Tool, Inc.

124 South Collins  
Arlington, TX 76010  
Phone: 817-461-7171 • Fax: 817-795-6651  
Toll Free: 888-461-7171  
Email: [info@eoasaw.com](mailto:info@eoasaw.com)  
Website: [www.eoasaw.com](http://www.eoasaw.com)



### **Item #45527, Amana Tool Carbide-Tipped Spoilboard Surfacing, Rabbeting, Flycutter, Slab Leveler, Surface Planer & Flattening 2 Dia x 1/2 x 1/2 Inch Shank Router Bit** **\$78.30**

Thank you for shopping with us! Carbide-tipped spoilboard surfacing & rabbeting router bit great for cutting tight corners and surface planing. Perfect for removing fine layers of materials. Also suitable for router sled machines. Make sure your router sled is fully stable and squared. Perfect for: Resurfacing spoilboards using CNC Planing large glued up panels using CNC Surfacing and finishing wood using timber slab machines Rabbeting or slotting Designed for planing & rabbeting the following materials: MDF Fiberboard HDF/LDF Balsa Core Plastic/Acrylic\*\* Chipboard Hardwood/Softwood \*\*Use lower CNC spindle RPM and adjusted feed-rate to prevent melting and adhesion of the acrylic material to the tool. Featuring: Exclusive carbide grade for highest quality of cut Maximum cutting efficiency Faster material removal process

SPECIFICATIONS	
<b>Manufacturer</b>	Amana Tool
<b>Diameter</b>	2 in
<b>Cut Height, Length, or Width</b>	1/2 in
<b>Flute</b>	4
<b>Overall Length</b>	2 1/2 in
<b>RPM</b>	28,000
<b>Shank</b>	1/2 in