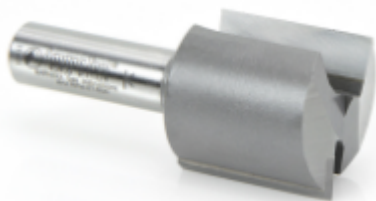


## Edge of Arlington Saw & Tool, Inc.

124 South Collins  
Arlington, TX 76010  
Phone:817-461-7171 • Fax: 817-795-6651  
Toll Free: 888-461-7171  
Email: [info@eoasaw.com](mailto:info@eoasaw.com)  
Website: [www.eoasaw.com](http://www.eoasaw.com)



### Item #45450, Amana Tool Carbide-Tipped Straight Plunge High Production 1 1/4" x 1 1/4" x 1/2" Shank - 2 Flute

**\$43.01**

Thank you for shopping with us!

In choosing a straight bit for any application, always select one with the shortest cutting edges and the shortest overall length that will reach the required cut depth. Excessive length intensifies deflection and vibration, which degrades cut quality and leads to tool breakage.

Use a two-flute bit where a fine finish is paramount. Two flutes balance the bit, eliminating vibration that degrades the cut finish. Two cuts per revolution yield a smooth surface, but feed rate is slightly reduced.

#### **Amax Extended Life Router Bits:**

- Extra strong carbide lasts 200% longer
- New generation of high wear outstanding carbide
- Superior geometric design provides super clean cuts
- Cost effective

Profile Sample:



SPECIFICATIONS	
<b>Manufacturer</b>	Amana Tool
<b>Diameter</b>	1 1/4 in
<b>Cut Height, Length, or Width</b>	1 1/4 in
<b>Flute</b>	2
<b>Note</b>	--
<b>Overall Length</b>	2 7/8 in
<b>Shank</b>	1/2 in
<b>Type</b>	Straight Plunge
<b>RPM</b>	Max RPM = 22,000