

## Edge of Arlington Saw & Tool, Inc.

124 South Collins

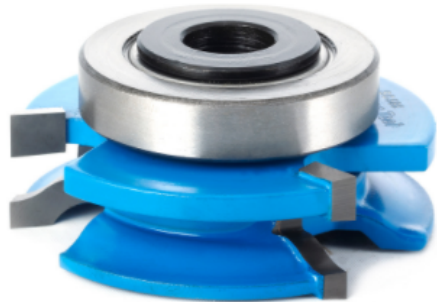
Arlington, TX 76010

Phone:817-461-7171 • Fax: 817-795-6651

Toll Free: 888-461-7171

Email: [info@eoasaw.com](mailto:info@eoasaw.com)

Website: [www.eoasaw.com](http://www.eoasaw.com)



### Amana Tool Reversible Stile & Rail Cabinet Door Sets w/Ball Bearing for 3/4" to 1 1/4" Material

Thank you for shopping with us! Designed for template shaping such as arched or cathedral doors, etc. Features a ball bearing center with a steel sleeve and is available with either 1/2," 3/4", or 1-1/4" inside diameter.

Item #	Manufacturer	Diameter	Cut Height, Length, or Width	Bore	Replacement Parts	Radius	Type	Angle	Price
SC586	Amana Tool	2 13/32 in	1 in	1/2 in & 3/4 in	47757 (42mm x 3/4 in x 9mm)	5/16 in	Roman Ogee	--	<b>\$71.23</b>
SC579	Amana Tool	2 29/32 in	1 in	1/2 in & 3/4 in	47757 (42mm x 3/4 in x 9mm)	5/16 in	Roman Ogee	--	<b>\$74.90</b>
SC577	Amana Tool	2 13/32 in	3/4 in	1/2 in & 3/4 in	47757 (42mm x 3/4 in x 9mm)	--	Tongue & Groove	--	<b>\$68.01</b>
SC587	Amana Tool	3 13/32 in	1 in	1/2 in & 3/4 in	47757 (42mm x 3/4 in x 9mm)	--	Bevel	18.6 deg	<b>\$71.23</b>
SC597	Amana Tool	2 1/2 in	1 1/4 in	1/2 in & 3/4 in	47757 (42mm x 3/4 in x 9mm)	--	Bevel	45 deg	<b>\$71.23</b>
SC588	Amana Tool	2 13/32 in	1 in	1/2 in & 3/4 in	47757 (42mm x 3/4 in x 9mm)	9/64 in	Classical	--	<b>\$71.23</b>
SC589	Amana Tool	3 13/32 in	1 in	1/2 in & 3/4 in	47757 (42mm x 3/4 in x 9mm)	3/16 in	Convex/Concave	--	<b>\$71.23</b>