

Edge of Arlington Saw & Tool, Inc.

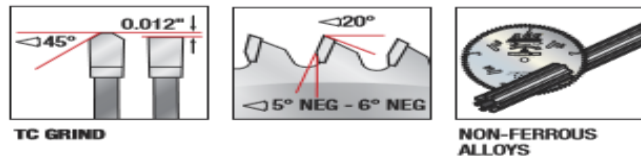
124 South Collins
 Arlington, TX 76010
 Phone: 817-461-7171 • Fax: 817-795-6651
 Toll Free: 888-461-7171
 Email: info@eoasaw.com
 Website: www.eoasaw.com



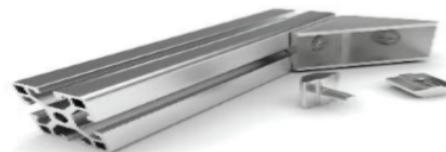
Amana A.G.E. Series Non-Ferrous for Thin Walled Aluminum Saw Blades: TCG Grind

Thank you for shopping with us!

Superior-Finish cuts in aluminum & non-ferrous metals. Designed specifically for cutting relatively thin walled (less than 1/4" thick) aluminum and non-ferrous extrusions and frames. Use a coolant or blade wax and clamp down the work piece when cutting non-ferrous metals. **Warning:** Never attempt to cut ferrous metals (steel, iron, etc.) with these blades.



-  **NON-FERROUS ALLOYS** EXCELLENT ✓
-  **THIN-WALLED PHENOLIC & HARD PLASTIC** EXCELLENT ✓
-  **ALUMINUM** EXCELLENT ✓
-  **BRASS/COPPER** EXCELLENT ✓



Item #	Manufacturer	Diameter	Bore	Grind	Hook Angle	Kerf	Note	Pinholes	Plate	Teeth	Price
--------	--------------	----------	------	-------	------------	------	------	----------	-------	-------	-------

MD5-505	Amana Tool	5 3/8 in	20 mm	TC	-5 deg	0.055 in	MD5-505 includes bushing from 20mm to 10mm.	--	0.039 in	50	\$53.78
MD6-605	Amana Tool	6 1/4 in	5/8 in	TC	-5 deg	0.079 in	5/8 arbor with diamond knockout.	--	0.063 in	60	\$86.10
MD7-585	Amana Tool	7 in	5/8 in	TC	-6 deg	0.110 in	--	--	0.087 in	58	\$71.74
MD8-645	Amana Tool	8 in	5/8 in	TC	-6 deg	0.110 in	One of Amana's most popular saw blades. 5/8 arbor with diamond knockout.	--	0.087 in	64	\$88.24
MD10-805	Amana Tool	10 in	5/8 in	TC	-5 deg	0.126 in	One of Amana's most popular saw blades.	--	0.098 in	80	\$109.46
MD10-805-30	Amana Tool	10 in	30 mm	TC	-5 deg	0.126 in	--	2/10/60, 2/7/42 & 2/9/46	0.102 in	80	\$109.46
MD10-105	Amana Tool	10 in	5/8 in	TC	-5 deg	0.126 in	One of Amana's most popular saw blades.	--	0.098 in	100	\$122.89
MD12-965TB	Amana Tool	12 in	1 in	TC	-5 deg	0.091 in	Thin Kerf	--	0.071 in	96	\$125.59
MD12-105	Amana Tool	12 in	1 in	TC	-5 deg	0.126 in	One of Amana's most popular saw blades.	--	0.098 in	100	\$124.35
MD12-105-30	Amana Tool	12 in	30 mm	TC	-5 deg	0.126 in	Pistorius, CTD	2/10/60, 2/7/42 & 2/9/46	0.098 in	100	\$124.35
MD12-105-5/8	Amana Tool	12 in	5/8 in	TC	-5 deg	0.126 in	Pistorius, CTD	--	0.098 in	100	\$124.35
MD12-125	Amana Tool	12 in	1 in	TC	-5 deg	0.126 in	--	--	0.098 in	120	\$179.40
MD14-105	Amana Tool	14 in	1 in	TC	-6 deg	0.126 in	One of Amana's most popular saw blades	--	0.098 in	108	\$170.48
MD15-105	Amana Tool	15 in	1 in	TC	-6 deg	0.126 in	--	--	0.098 in	100	\$173.14
MD18-125	Amana Tool	18 in	1 in	TC	-6 deg	0.150 in	--	--	0.126 in	120	\$251.18

MD20-125	Amana Tool	20 in	1 in	TC	-6 deg	0.173 in	--	--	0.141 in	120	\$296.96
MD20-125-30	Amana Tool	20 in	30 mm	TC	-6 deg	0.173 in	--	2/10/60, 2/7/42 & 2/9/46	0.141 in	120	\$296.96
MD22-125	Amana Tool	22 in	1 in	TC	-5 deg	0.173 in	Plate with copper plug.	--	0.149 in	128	\$466.50
MD24-145	Amana Tool	24 in	1 in	TC	-5 deg	0.181 in	Plate with copper plug.	--	0.158 in	140	\$574.16
MD16-125	Amana Tool	16 in	1 in	TCG	-6 deg	0.150 in	--	--	0.126 in	120	\$233.25