

Edge of Arlington Saw & Tool, Inc.

124 South Collins

Arlington, TX 76010

Phone: 817-461-7171 • Fax: 817-795-6651

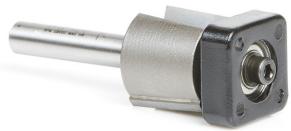
Toll Free: 888-461-7171

Email: info@eoasaw.com

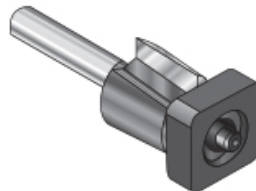
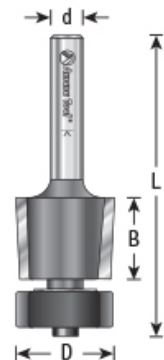
Website: www.eoasaw.com

Amana Tool Scratch-Free Laminate Trimmers w/ Euro™ Square Bearing Carbide-Tipped Router Bits

Thank you for shopping with us! 2-Flute These bits are designed according to specifications with a slight taper that allows for adjustment up or down on the work edge to finish off the edge with a smooth and burr-free cut. The square bearing is manufactured with a non-stick Teflon®, which won't mark your edge so it can be easily wiped clean. (Refer to [Euro™ Square Bearings](#).) -Non-stick Teflon® square bearing will not mark your edge -Will not scratch or mark any laminates with matte or high gloss finish -Carbide-tipped -Glue won't stick to bearing -Beveled cutter means little or no hand filing -Beveled cutter can be resharpened -Use 1/2" diameter bit with laminate trimmers AMAX Extended Life Features: 200% longer life-time even when working with abrasive materials Superior geometric design Advanced grinding technology that improves the carbide's



resistance to wear Super clean cuts



Item #	Manufacturer	Diameter	Cut Height, Length, or Width	Bearing(s)	Flute	Note	Overall Length	Shank	Price
47147	Amana Tool	1/2 in	19/64 in	SQB100, Amana Tool 3/16 x 1/2 x .223 x 3/32 Radius Euro Square Bearing	2	Square bearing is manufactured with non-stick Teflon	1 3/4 in	1/4 in	\$26.55
47148	Amana Tool	3/4 in	5/8 in	SQB102, Amana Tool 3/16 x 3/4 x .273 x 3/32 Radius Euro Square Bearing	2	Square bearing is manufactured with non-stick Teflon	2 3/8 in	1/4 in	\$35.63
47149	Amana Tool	3/4 in	5/8 in	SQB102, Amana Tool 3/16 x 3/4 x .273 x 3/32 Radius Euro Square Bearing	2	Square bearing is manufactured with non-stick Teflon	2 5/8 in	1/2 in	\$32.70
47146	Amana Tool	1/2 in	1/2 in	SQB100, Amana Tool 3/16 x 1/2 x .223 x 3/32 Radius Euro Square Bearing	2	Square bearing is manufactured with non-stick Teflon	2 1/8 in	1/4 in	\$32.59